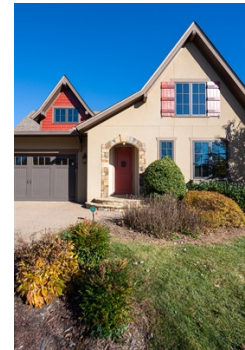


## Main-Level Living in Gated North Asheville Community!



\$ 1,295,000



38 Chantilly Drive, Asheville, NC 28804

- » Beds: 3 | Baths: 2 Full
- » MLS #: 4320562
- » Single Family | 2,262 ft<sup>2</sup> | Lot: 6,098 ft<sup>2</sup>
- » Spacious screened porch with serene views and privacy
- » Hardwood floors throughout
- » More Info: [38ChantillyDrive.com](http://38ChantillyDrive.com)



**LeNoir Medlock**  
(828) 258-2953 (office)  
(828) 691-9981 (cell)  
[lenoirm@preferredprop.com](mailto:lenoirm@preferredprop.com)  
<http://www.PreferredProp.com>



Preferred Properties Of Asheville  
39 Woodfin Street  
Asheville, NC 28801  
(828) 258-2953

This one-level Thoms Estate home offers three bedrooms and two baths, providing a spacious feel while remaining an ideal option for those seeking to downsize comfortably. The house has hardwood floors throughout, a large screened porch with mountain views and a generous primary suite plus separate guest quarters and a large laundry all on one-level. Located in a prestigious gated North Asheville neighborhood, this property offers an array of amenities, including pickleball and bocce courts, scenic walking trails, a pavilion with fire pits and grills, a playground, and a thriving community garden. Designed for a low-maintenance lifestyle, this lock-and-leave home provides exceptional convenience. Residents enjoy close proximity to the Asheville Country Club and a wide selection of nearby dining and shopping. This setting delivers refined living with strong community appeal.

